

LEGEND

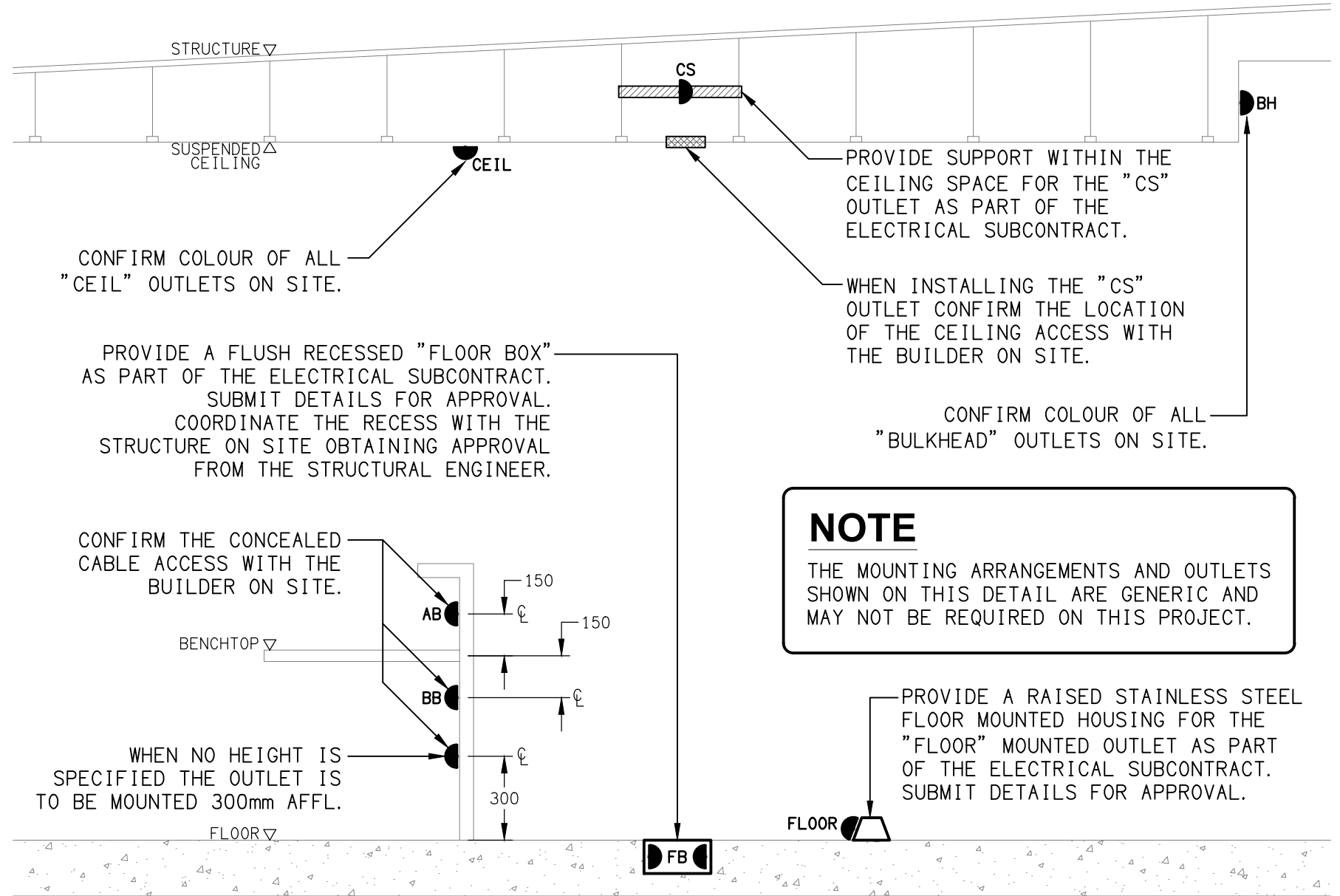
	ELECTRICAL SERVICES SWITCHBOARD.
	SWITCHBOARD / CONTROL PANEL NOT PROVIDED AS PART OF THE ELECTRICAL SUBCONTRACT.
	SINGLE POWER OUTLET.
	DOUBLE POWER OUTLET.
	SPECIAL PURPOSE POWER OUTLET.
	SINGLE PHASE ISOLATOR.
	THREE PHASE ISOLATOR.
	JUNCTION BOX AS NOTED.
	ELECTRICAL CABLE TRAY, TYPE AS NOTED.
	WORKSTATION OUTLETS.
	CONDUIT ROUTE.
	x DENOTES CONDUIT TYPE.
	ELECTRICAL PIT, TYPE AS NOTED.
	HAND DRYER CONNECTION.
	LIGHTING PRESENCE DETECTOR SWITCH.
	ONE-WAY LIGHT SWITCH.
	TWO-WAY LIGHT SWITCH.
	LIGHTING SWITCHPANEL, TYPE x.
	CIRCUIT LINE.
	SWITCH LINE.
	POWER CIRCUIT DESIGNATION. DENOTES DB AND CIRCUIT.
	ELECTRICAL EQUIPMENT AS NOTED.
	FITTING TO BE SURFACE MOUNTED.
	OUTLET MOUNTED WITHIN RECESS KIT.
	CAT-6 UTP RJ45 COMMUNICATIONS OUTLET.
	CAT-6A STP RJ45 COMMUNICATIONS OUTLET.
	CAT-6 CCTV RJ45 PLUG, TYPE x.
	CAT-6 VAPE RJ45 PLUG.
	ELECTRIC STRIKE CABLED CONNECTION, TYPE x.
	ACCESS CONTROL CARD READER CABLE.
	INTRUDER DETECTION REED SWITCH CABLE.
	INTRUDER DETECTION SENSOR CABLE.
	INTRUDER DETECTION PIZEO SIREN CABLE.
	TEMPERATURE CONTROLLED EXHAUST FAN.

LEGEND

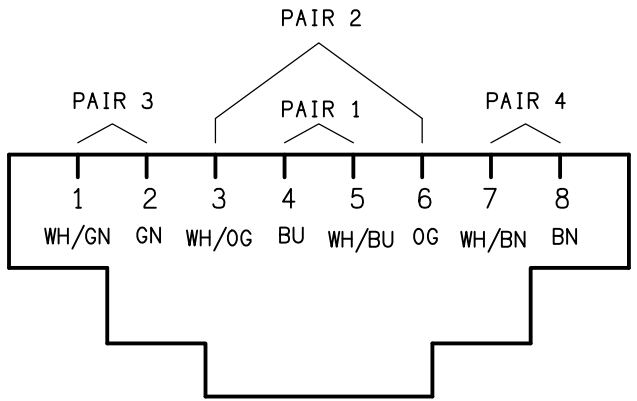
	E1: RECESSED LED EMERGENCY LIGHT, WHITE.
	E2: CUSTOM SURFACE CAN MOUNTED LED EMERGENCY LIGHT, BLACK.
	E3: RECESSED LED EMERGENCY LIGHT, BLACK.
	E4: SURFACE LED EMERGENCY LIGHT, WHITE.
	EX: EMERGENCY LED EXIT LIGHT, WHITE.
	EX WP: WEATHERPROOF EMERGENCY LED EXIT LIGHT, WHITE.
	Lx: LIGHT FITTINGS C/W NON-MAINTAINED EMERGENCY BATTERY PACK. TYPE AS NOTED.
	L1: 2800 LONG ROD SUSPENDED EXTRUSION LIGHT.
	L2: 2400 LONG ROD SUSPENDED EXTRUSION LIGHT.
	L3: EXTERNAL FLOOD LIGHT.
	L4: 1000 LONG ROD SUSPENDED EXTRUSION LIGHT.
	L5: 1800 LONG ROD SUSPENDED EXTRUSION LIGHT.
	L6: SURFACE MOUNTED CAN DOWNLIGHT.
	L7: RECESSED DOWNLIGHT.
	L8: 600 x 600 SURFACE MOUNTED FLAT PLATE LED LIGHT.
	L9: 2100 LONG ROD SUSPENDED EXTRUSION LIGHT.
	L10: 3600 LONG ROD SUSPENDED EXTRUSION LIGHT.
	L11: CEILING BULKHEAD LED STRIP LIGHT.
	L12: RECESSED DOWNLIGHT.
	L13: RECESSED DOWNLIGHT.
	L14: RECESSED DOWNLIGHT.
	L15: 1200 LONG SURFACE BATTEN C/W PRESENCE SENSOR.
	L16: 1200 LONG SURFACE BATTEN.
	L17: SURFACE MOUNTED BUNKER LIGHT.
	L18: SURFACE MOUNTED BUNKER LIGHT.
	L19: BOLLARD LIGHT.
	L20: INGROUND UP LIGHT.
	AS1670 COMPLIANT FIRE INDICATOR PANEL INCORPORATING THE EWCIE AND FDCIE.
	SURFACE MOUNTED ADDRESSABLE AS7240.7 POINT SMOKE DETECTORS WITH A PERFORMANCE OF 6 TO 12 % OBS/M SET AT 7.8 %.
	CONCEALED SPACE ADDRESSABLE AS7240.7 POINT SMOKE DETECTORS WITH A PERFORMANCE OF 6 TO 12 % OBS/M SET AT 7.8 %. PROVIDE THE DETECTOR WITH A REMOTE INDICATOR AND ACCESS BRACKET AS REQUIRED.
	SURFACE MOUNTED AS7240.5: 2018 TYPE B SEALED FIXED TEMPERATURE ADDRESSABLE THERMAL DETECTOR WHITE.
	SURFACE MOUNTED AS7240 COMPLIANT WHITE EMERGENCY EVACUATION SPEAKER C/W PLASTIC HOUSING.
	RECESSED AS7240 COMPLIANT EMERGENCY EVACUATION SPEAKER C/W WHITE PLASTIC GRILL.
	SURFACE MOUNTED WEATHERPROOF AS7240 COMPLIANT EVACUATION HORN SPEAKER.
	WALL MOUNTED FIRE ALARM STROBE TO AS1670-2018 AND AS7240.
	PUBLIC ADDRESS RECESSED SPEAKER.
	PUBLIC ADDRESS SURFACE MOUNTED SPEAKER.
	PUBLIC ADDRESS HORN SPEAKER.

LEGEND

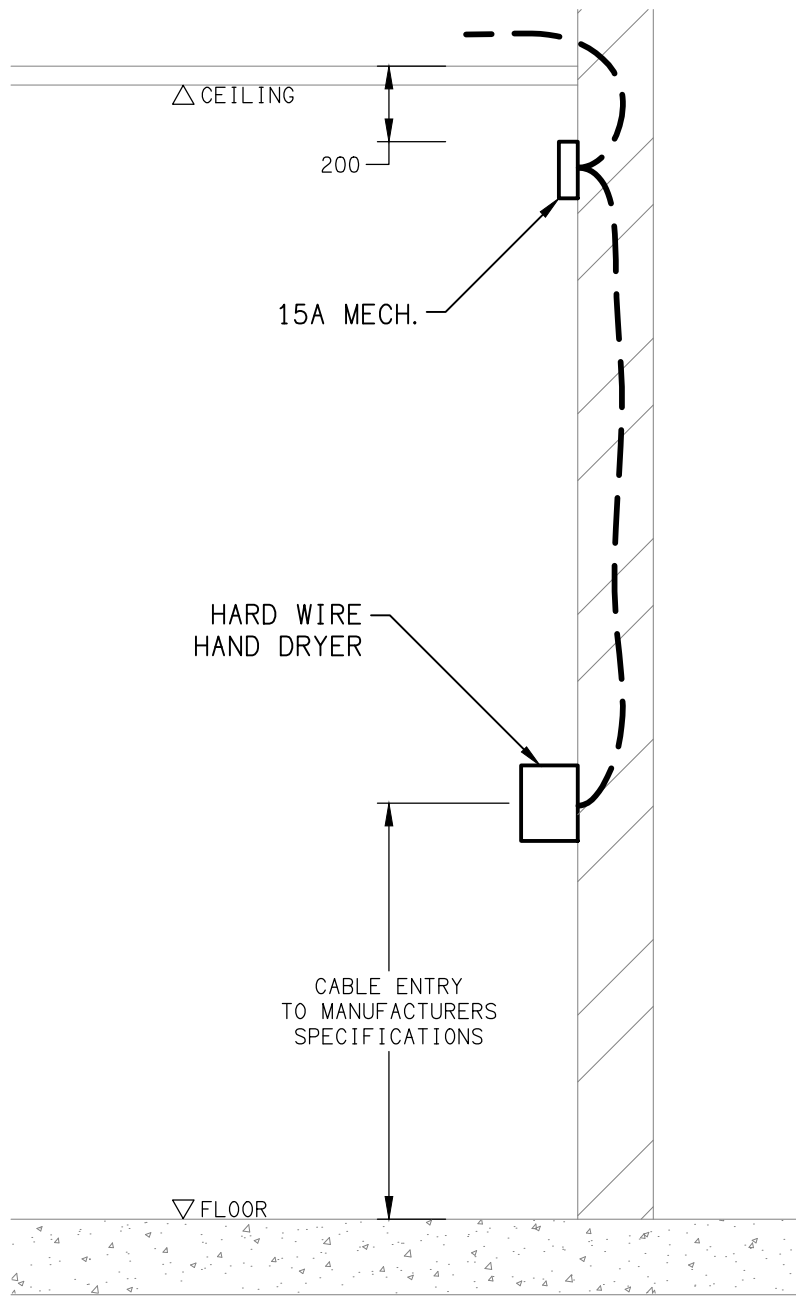
	RETAIL METER.
	PRIVATE MULTI FUNCTION METER.
	NCC BCA PART J ENERGY METER.
	SOLAR ENERGY METER.
	CIRCUIT BREAKER MOTOR UNIT.
	WIRELESS CONTROLLED PROTECTION RELAY.
	SOLAR GENERATION SIGNALING DEVICE.
	SOLAR DATA LOGGER.
	SOLAR NETWORK PROTECTION CTs.
	SOLAR NETWORK PROTECTION SMART METER (WIRELESS).
	MANUAL TRANSFER SWITCH.
	REFER TO DETAIL NOTED FOR THE AREA SHOWN HATCHED. ADDITIONAL OUTLETS & FITTINGS MAY BE SHOWN ON DETAIL.
	FUSE.
	SINGLE PHASE.
	THREE PHASE.
	CURRENT TRANSFORMER C/W REMOVABLE LINK.
	FUSE LINK.
	COMBINED FUSE SWITCH.
	CIRCUIT BREAKER.
	ISOLATOR.
	RESIDUAL CURRENT DEVICE.
	CONTACTOR - NORMALLY OPEN.
	CONTACTOR - NORMALLY CLOSED.



DETAIL  
TYPICAL OUTLET MOUNTINGS  
NOT TO SCALE



SCHEMATIC  
RJ45 PINOUT CONFIGURATION  
NOT TO SCALE



DETAIL  
HAND DRYER CONNECTION  
NOT TO SCALE